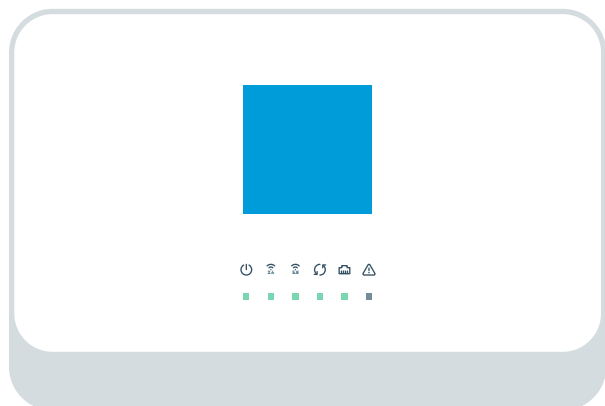


What's in the Box

If any of these items are missing, please contact community@samknows.com.

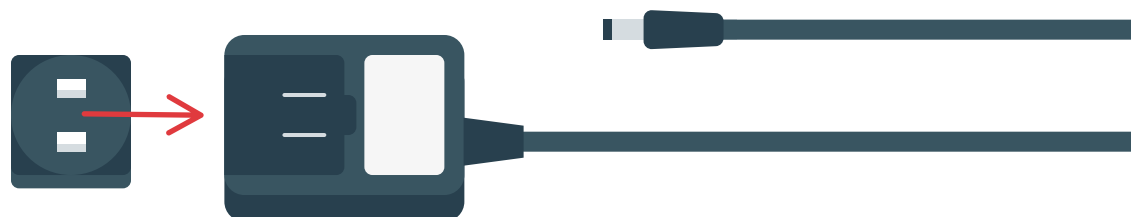


SamKnows **Whitebox**



Ethernet cable (3ft)

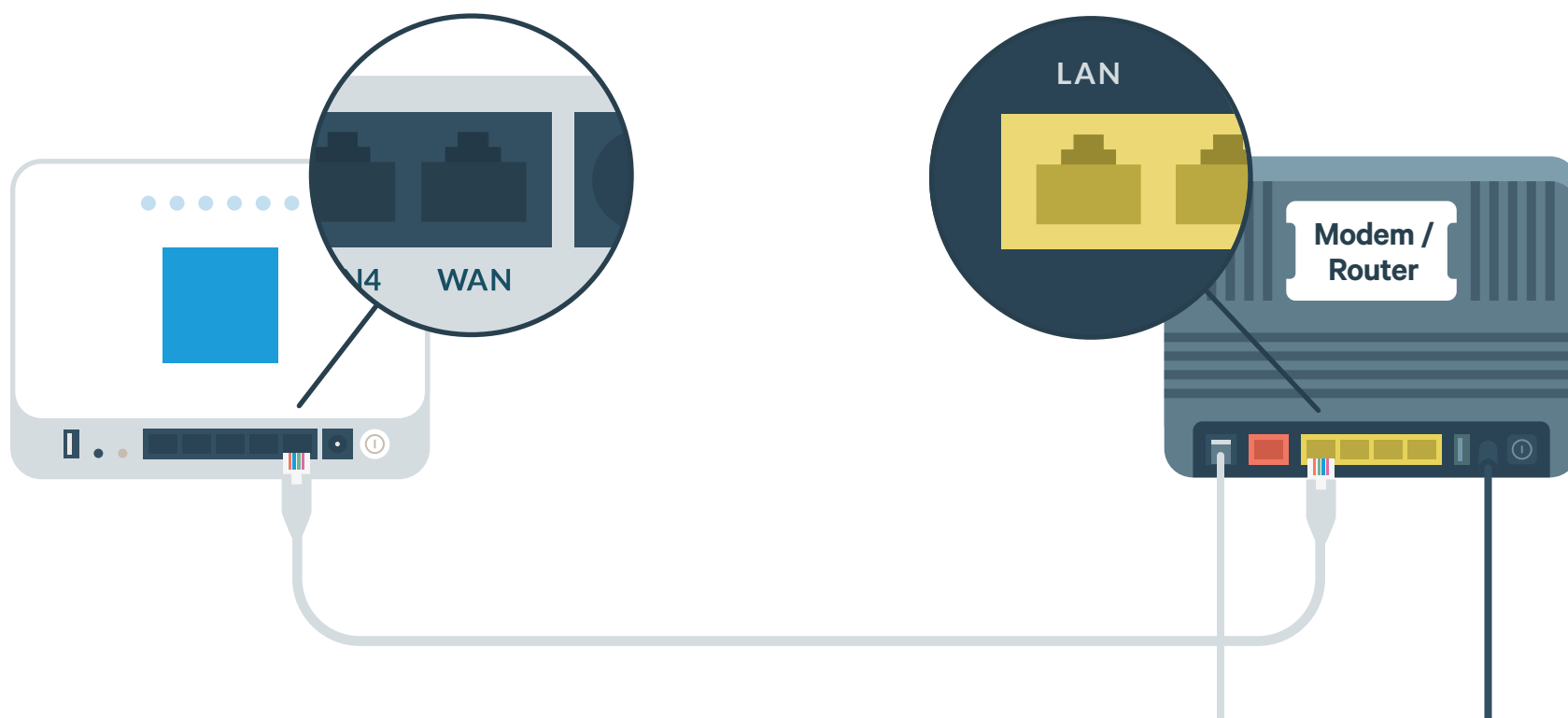
Power supply (plug requires assembly)



1. Connect

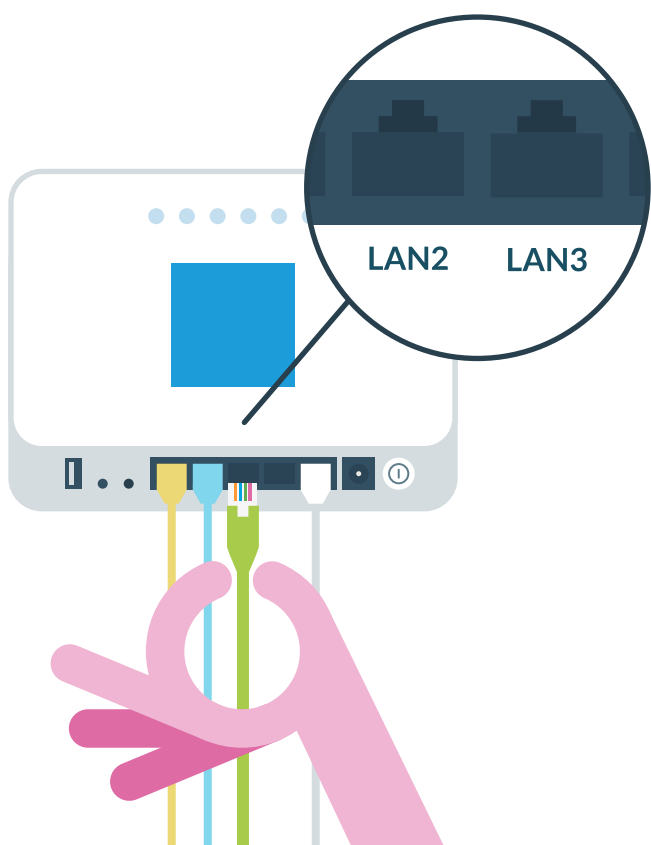
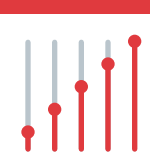
Plug one end of the **ethernet cable** into the port marked '**WAN**' on the back of the Whitebox.

Connect the other end of the ethernet cable into a spare '**LAN**' port on your combined modem / router.



! If you have a separate modem and router

Keep the modem connected to your personal router. Your Whitebox will be connected to your router.




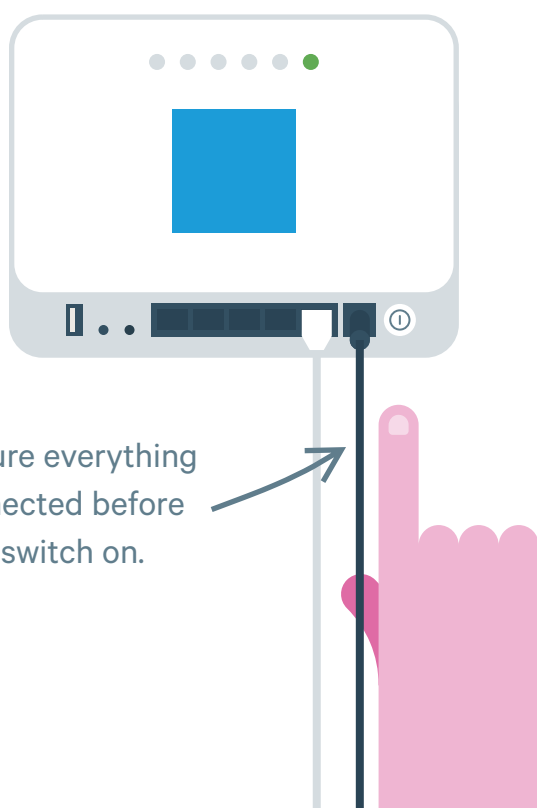
2. Plug-In Wired Devices

If you have other wired devices (e.g. desktop computer) occupying the ‘LAN1 to LAN4’ ports on your router, move them to the ‘LAN’ ports on your Whitebox.

3. Power-Up

Connect the **power supply** to your Whitebox. Plug into your power outlet, then press the button on the back marked ‘ON/OFF’.

When the light below the  icon remains steady the Whitebox is fully set up.



Make sure everything is connected before you switch on.

4. Log-In

Your Whitebox is now ready to start testing your internet performance.

You’ll be able to see the test results from your Whitebox on the **SamKnows One** dashboard. You will also receive an email telling you your Whitebox has been connected. Test results will start to populate on your dashboard after 48 hours.

If you can’t login to your SamKnows One dashboard, visit support.samknows.one.

